

# Safe Routes to School

---

# Safe Routes to School:Chaska Community Center and School Complex

Question #1: Where do critical traffic circulation and pedestrian access conflicts exist surrounding the School and Community Center complex in Chaska?

Question #2: How can the three Es of Safe Routes to School be applied to improve traffic circulation and the pedestrian environment at this location?

Question #3: What improvements to CSAH 10 should be considered by the County in its corridor study to reduce conflicts, improve site access, and increase pedestrian safety?

# Nodes for Chaska School and Community Center Complex



# Areas of Concern

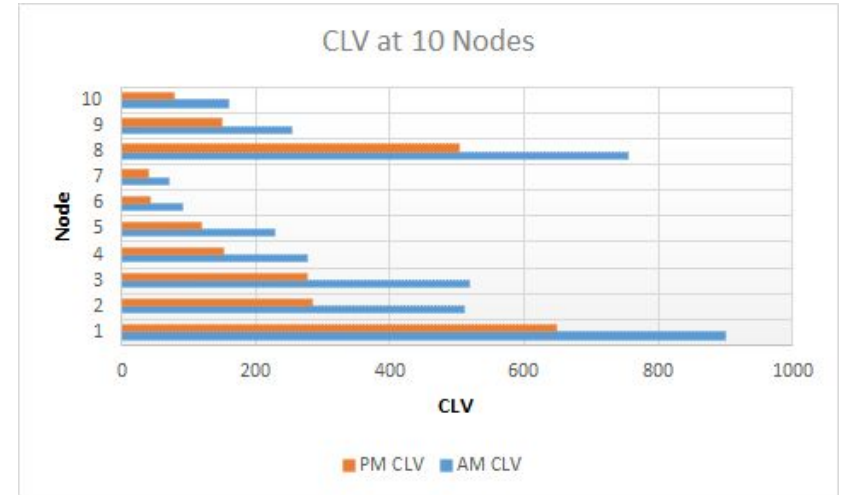
- Bus loading in the roundabout
- Intersection of HWY 41 and west school exit
- Lack of pedestrian friendly crosswalks on Engler
- Trail through ravine north of complex
- Lack of sidewalks in and around complex



# Calculated CLV in the AM and PM

Node	AM CLV	LOS
1	900.5	B
2	510	A
3	519	A
4	276	A
5	229	A
6	91	A
7	71	A
8	755	A
9	253	A
10	160	A

Node	PM CLV	LOS
1	648	A
2	285	A
3	277	A
4	152	A
5	120	A
6	42	A
7	41	A
8	502.5	A
9	150	A
10	79	A



# Proposals- Bus Loading

- Removal of roundabout
  - Replace roundabout and green space with bus loading zone
- Two lane road
  - Allows for simpler use by drivers, keeps traffic in one area, minimizes traffic crossings
- Bus capacity
  - Approximately 50 buses with ample room
- Bus loading zone separation
  - Separated by a wide yellow line and a raised curtain between road and loading zone
- Child safety
  - Students from west school don't have to cross traffic and students from the east school only cross traffic once



# Intersection of HWY 41 and west school exit

- Reduce speed of road to 30 mph
  - Place signs .2 miles north of HWY 41 and Engler Blvd
- Install speed indicator sign to enforce speed reduction (figure 1)
- Display speed limit signs along with school zone signs
  - Post School hours (Figure 2)

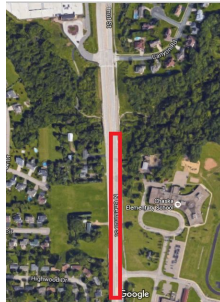


Figure 1



Figure 2

# Intersection of Engler Blvd and Park Ridge Dr

- Install a signalled crosswalk (HAWK)
  - Across the west side of the intersection running north and south
- Would alert cars that pedestrians are present and looking to cross the road
- A sidewalk will then be extended into the neighborhood to encourage more students to cross here
- New proposal in the upper right picture
  - Signalled crosswalk in red
  - New sidewalks in black





# General Crosswalks and Sidewalks

## Crosswalks

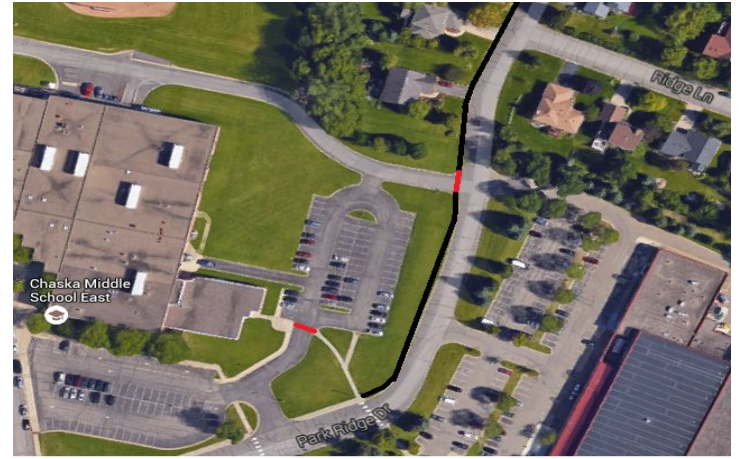
- Node 2 across Enger Blvd to the east of Crest Dr. (1)
- South side of the parking lot on the east side of Chaska Middle School East (2)
- West side of Park Ridge Dr. across the school road (2)

## Sidewalks

- Connecting node 2 and 3 on south side of Euler Blvd. (3)
- South from node 2 into neighborhood along east side of Crest Dr. (1)
- South from node 3 into neighborhood along west side of Skyview Dr. (3)
- West side of Park Ridge Dr. starting at existing sidewalk across from Community Center and into the neighborhood (2)
- South west side of Chaska East connecting two current sidewalks (4)
- Through ravine north of complex to sidewalk along HWY 41 (5)



(1)



(2)



(3)

(4)



(5)

# The 3 E's

Engineering

Education

Enforcement

# Education

- Newsletter sent to parents and students detailing changes
  - Would explain what's to come, while also laying out benefits of using active modes of travel
  - Could be combined with a school assembly
- Contact local news (either before or after implementation) to collaborate a segment on the developments
  - Would notify surrounding neighborhoods, help commuters obey new laws
  - Encourage other districts to take initiative about their own active travel capacities



# Enforcement

- Proper upkeep and maintenance of infrastructure (from disrepair or weather)
  - Encourages public use and increases safety
- Add police presence during rush hours
  - Used jointly with heightened fines/penalties due to school proximity
- Incorporate staff and students as additional supervision
  - Utilizing a student-run crossing-guard with volunteer parents would help enforce while also educating through participation



Thanks!