

Resilient Communities Project–City of Minnetonka 2012–2013 Partnership

The mission of the Resilient Communities Project is to connect communities in Minnesota with the wide-ranging expertise of University of Minnesota faculty and students to address pressing local issues in ways that advance sustainability and resilience.



During the 2012–2013 academic year, RCP partnered with the City of Minnetonka, a fully developed suburb in the Twin Cities metropolitan area, on 14 community-identified projects. These projects were matched with 25 courses spanning 12 departments across 8 academic colleges at the University of Minnesota Twin Cities campus, engaging more than 200 students.

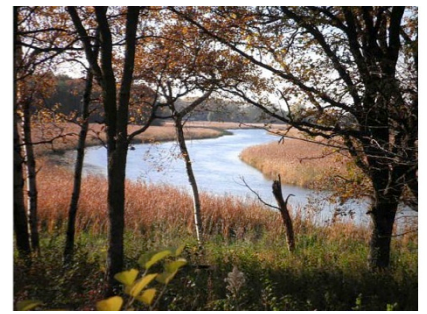
Housing

Density and Housing Options Study	Identified existing policies that inhibit affordable and mid-priced housing, as well as strategies to encourage a more diverse range of housing options
Housing and Aging in Place	Investigated opportunities to help residents age in place through a broader range of housing options, more compact urban design, better transportation options, and improved access to social services and other assistance
Mid-Priced Housing Market Analysis	Conducted a GIS analysis to determine where residential “market leakage” to other communities is occurring for mid-priced housing that appeals to empty-nesters looking to downsize or young families who desire move-up housing
Housing Program Evaluation	Evaluated an existing housing rehabilitation program for low- to medium-income residents to determine why the program is underused, and provided recommendations to improve program promotion, administration, and logistics

Environment

Storm Water and Illicit Discharge Regulation	Conducted an audit of storm water discharge ordinances, and provided recommendations for strengthening regulations and streamlining permitting process
Water Management at Ridgedale Mall	Analyzed Ridgedale Mall redevelopment site and identified specific interventions for reducing storm water runoff and surface water pollution
Water and Energy Conservation	Developed education and outreach strategies to assist businesses in the community to address water and energy conservation through operations and site management
Water Resources Prioritization Plan	Modeled leaf litter nutrient inputs and nutrient and chloride surface transport within four priority watersheds, and developed a prioritization plan to guide future investments to preserve and restore water quality
Green Roofs and Rooftop Gardens	Conducted an ethnographic analysis to understand perceptions among residents, developers, and community about green roofs, and recommended innovative best practices for implementing green roofs in a northern climate and suburban context





Civic Engagement	
Neighborhood Identities and Resident Engagement	Recommended strategies for strengthening social ties and community by augmenting existing social networks among residents rather than pursuing creation of geographically-defined neighborhood associations
Land Use and Development	
Post-Development Critique	Revisited three controversial past developments to evaluate project outcomes, and recommended strategies to improve the public input process to ensure the needs and concerns of both developers and residents are being considered
Conservation Development Standards	Created a conservation development scorecard to encourage sustainable developments that protect natural environmental features, preserve open space, protect natural habitats for wildlife, and maintain rural character
Parking and Land Use	Reviewed existing parking regulations, computed average parking demand, and recommended innovative parking management strategies to reduce excess parking
Transportation	
* Transportation Demand Management Policy	Reviewed TDM ordinances and best practices in comparable suburban communities nationwide and recommended an innovative two-phase TDM policy to reduce peak-hour demand
Transit-Oriented Development on the Southwest Light-Rail Transit Line	Developed detailed policy-oriented case studies of TOD districts in similar cities, recommended model districts for proposed future station areas and transit hubs in Minnetonka, and recommended guidelines for the city's financial and policy role in future redevelopment projects in these locations

* Received the annual "Best Student Project" award from the Minnesota chapter of the American Planning Association

For more information, contact:

Carissa Schively Slotterback, Director cschively@umn.edu, 612.625.0640
 Mike Greco, Program Manager mgreco@umn.edu, 612.625.7501

Web: www.rcp.umn.edu
 Twitter: @RCPumn
 Facebook: RCPumn
 E-mail: rcp@umn.edu

Resilient Communities Project

UNIVERSITY OF MINNESOTA
Driven to DiscoverSM